

THE VOLUNTEER STAR

a monthly newsletter from your friends at the



KANSAS VOLUNTEER COMMISSION
SERVE • ENGAGE • EMPOWER

KANSAS RANKS #8 IN FORMAL VOLUNTEERING

Kansas Gives Back.

In 2021, more than **706,000** residents volunteered through an organization contributing **\$1.4 billion** in economic value.

More than **1.2 million** residents helped their neighbors in the height of the pandemic.

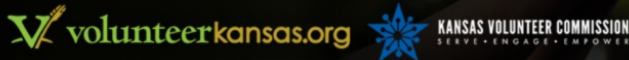


The [Volunteering and Civic Life in America research](#) is the most comprehensive data on American volunteering and civic engagement assembled. Based on a survey conducted by [AmeriCorps](#) and the [US Census](#) every other year, the research includes data on volunteering through organizations, informal helping and other civic behaviors. The most recent results find that over half of Americans, or 124.7 million people, informally helped their neighbors at least once in the past year. Additionally, more than 23 percent of Americans, or 60.7 million people, formally volunteered with an organization, giving more than 4.1 billion hours of service with an estimated economic value of \$122.9 billion.

GIVE BACK KANSAS CHALLENGE



An employer-supported
volunteer challenge
<https://bit.ly/Givebackks>



The Give Back Kansas Challenge is an eight-week challenge that engages Kansans in employer-supported volunteering, both during and outside the workday. The Kansas Volunteer Commission and Volunteer Kansas are excited to co-partner in this challenge because much research shows the connection between employer-supported volunteering and improved employee engagement, employee wellness, organizational commitment, job satisfaction, and retention. There is also research connecting employee engagement with increased profitability and productivity.

There is no cost to participate, and the challenge is open to ANY employer in Kansas (for-profit, non-profit, and government). Employers may participate as one organization or by location if there are multiple sites (e.g., 123 Construction-Lawrence or ABC Insurance-Salina). Employers register in advance to participate, and volunteer hours are reported through an organization's point of contact through an online report form. Non-profits participating in the challenge are encouraged to invite the local businesses they connect with to participate.

Based on the number of entries received and company size, employers will be divided into three categories (large, medium, and small). Winners will be selected by determining the average number of volunteer hours per employee completed during the challenge period (total volunteer hours ÷ total employees). The leaderboard will be updated every Monday! Employers achieving the highest average in each size category will be awarded a \$1,000 donation to a charity of their choice.

If you have questions, please get in touch with the Kansas Volunteer Commission at jdorsey@ksde.org or (785) 296-3163.

VOLUNTEER MANAGER SUPPORT MINI-GRANT OPPORTUNITY

Volunteer Manager Support Mini-Grant



Applications Due:
3/1/2023

Guidelines & Application at:
kanserve.org



KANSAS VOLUNTEER COMMISSION
KANSERVE.ORG

FEBRUARY IS BLACK HISTORY MONTH!

Celebrating BLACK HISTORY MONTH



During February, National #BlackHistoryMonth, we believe Black Lives Matter, Black Mentors Matter, and Black Mentees Matter. During February, we join those across the country in recognizing the innumerable contributions of Black Americans, centering Black Youth voice, and amplifying opportunities for greater equality and inclusion within the mentoring field.

[Black History Month - MENTOR \(mentoring.org\)](#)

- [Guide to Mentoring Boys and Young Men of Color \(downloadable resource\)](#)
- [Supporting Youth in the Wake of Trauma \(downloadable resource\)](#)
- [Amplifying the Voices of Black Girls \(recorded webinar\)](#)
- [Tips for Leading with Intention and taking Action Steps in the fight for Racial Justice \(pdf\)](#)

More resources are available at [mentoring.org](#).



Black History Month

DOUGLAS COUNTY CASA EARNS SERVICE ENTERPRISE CERTIFICATION



In January 2023, the Kansas Volunteer Commission notified the Douglas County CASA that it was the 6th nonprofit in the state to become Service Enterprise Certified!

The Service Enterprise program, administered by ALIVE (Association of Leaders in Volunteer Engagement), strengthens nonprofit capacity through the fundamental and strategic use of volunteers and their skills to address community needs, according to volunteeralive.org. A

Service Enterprise is an organization that strategically leverages volunteers to achieve operational efficiency and greater social impacts.

“The process of applying for and working on our Service Enterprise certification has provided us the opportunity, the accountability and a network of peers to focus on improving our focus on recruitment, onboarding and support of all of our volunteers,” said Erick Vaughn, executive director of Douglas County CASA Inc. “It has really helped confirm much of what we do, while allowing and supporting us to expand and improve volunteer management best practices.”

Research conducted by the TCC Group, a national program, and evaluation firm, found that organizations operating as Service Enterprises outperform peer organizations on all aspects of organizational effectiveness and are more adaptable, sustainable, and capable of scaling their work. In fact, 80% of Service Enterprise organizations report increased volunteer and skill-based volunteers.

The Service Enterprise Initiative is a national change management program that helps organizations gain a greater return on volunteer investment to better achieve their mission. For more information regarding Service Enterprise, please get in touch with volunteer@ksde.org.

2023 MINI GRANT SERIES

2023 MINI-GRANT SERIES

MENTOR CAPACITY BUILDING

GUIDELINES & APPLICATION RELEASE: 1/06/2023

9/11 NATIONAL DAY OF SERVICE

GUIDELINES & APPLICATION RELEASE: 7/03/2023

VOLUNTEER MANAGER SUPPORT

GUIDELINES & APPLICATION RELEASE: 2/01/2023

RURAL & INDIGENOUS COMMUNITIES

GUIDELINES & APPLICATION RELEASE: 8/01/2023

YOUTH CIVIC ENGAGEMENT

GUIDELINES & APPLICATION RELEASE: 3/27/2023

MLK NATIONAL DAY OF SERVICE

GUIDELINES & APPLICATION RELEASE: 10/09/2023

SOCIAL JUSTICE CAPACITY BUILDING

GUIDELINES & APPLICATION RELEASE: 5/01/2023



KANSAS VOLUNTEER COMMISSION
KANSERVE.ORG

FOLLOW US ON SOCIAL MEDIA TO STAY UP-TO-DATE
ON ALL OUR MINI-GRANT OPPORTUNITIES

STAFF AND COMMISSIONER SPOTLIGHT



The Kansas Volunteer Commission staff found several ways to serve in the community in January.

Top photo:

On Dr. Martin Luther King Jr. Day of Service, Haley Matherly (second from left) joined Commission Chair, Amy Pinger (third from left), at the Harvesters food packing service project.

Later in the month, Elaine Rodriguez (bottom row), Tierney Kirtdoll, Jessica Dorsey, Amanda Noll, Sarah Palubinski and Kay Emerson (top row left to right) served at the Boy & Girls Club of Topeka. The team members painted walls and laid carpet squares in the organization's new social-emotional learning space.

UPCOMING EVENTS

The Mission of Managers of Volunteer Engagement (M.O.V.E.) is to build and engage a network of volunteer managers and cultivate a volunteerism culture.

M.O.V.E. Topeka

Meets the Third Wednesday of Each Month

Wednesday, February 15, 2023

9:00 to 10:00 AM

To learn more, please visit www.moveks.org.

Or reach out via [Facebook](#).

M.O.V.E. Kansas

Virtual

Meets the Fourth Thursday of Each Month

Thursday, February 23, 2023

9:00 to 10:00 AM

To learn more, please email

united.way.of.franklin.co@gmail.com

Volunteer Managers Meeting United Way of Douglas County

Meets the 2nd Tuesday of Odd Numbered Months

Tuesday, March 14, 2023

9:00 to 10:00 AM

To learn more, please email

kabelruch@uwkawvalley.org

Volunteer Managers Network United Way of the Plains

2023 Dates T.B.D.

12:00 to 1:00 PM

To learn more, please email Abel Frederic

afrederic@unitedwayplains.org

NOTE: The above dates, times, and locations are subject to change.

CONNECT WITH OUR STAFF



Dr. Jessica Dorsey
Commission
Executive Director
 (785) 296-3163
jdorsey@ksde.org



Kay Emerson
AmeriCorps Kansas
Coordinator
 (785) 368-6232
kemerson@ksde.org



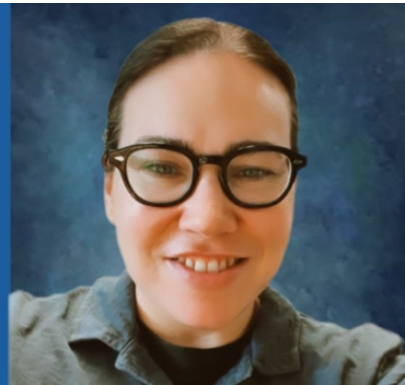
Amanda Noll
Financial Specialist
 (785) 368-6207
anoll@ksde.org



Tierney Kirtdoll
Mentor Kansas
Coordinator
 (785) 368-6211
tkirtdoll@ksde.org



Sarah Palubinski
School & Community
Partnership
Coordinator
 (785) 296-7801
spalubinski@ksde.org



Elaine Rodriguez
Administrative
Specialist
 (785) 368-7436
erodriguez@ksde.org



Haley Matherly
Volunteer
Engagement
Coordinator
 (785) 296-5712
volunteer@ksde.org



Meg Pearson
Part-Time Service
Enterprise Trainer
mpearson@ksde.org



[LIKE US ON FACEBOOK](#)



[VISIT OUR WEBSITE](#)

Kansas Volunteer Commission | 900 SW Jackson Street Suite 105, Topeka, KS 66612

[Unsubscribe volunteer@ksde.org](#)

[Update Profile](#) | [Constant Contact Data Notice](#)

Sent by [volunteer@ksde.org](#) powered by



Try email marketing for free today!