

THE VOLUNTEER STAR

a monthly newsletter from your friends at the



KANSAS VOLUNTEER COMMISSION
SERVE • ENGAGE • EMPOWER

MARCH IS WOMEN'S HISTORY MONTH!



March is Women's History Month, a time to honor those who have shattered glass ceilings and reflect on how we can continue driving their work today. To join us in celebrating the leadership and accomplishments of women in the mentoring movement and elevating the diverse voices and experiences of young women and girls from across the country, go to: www.mentoring.org/whm

During #WomensHistoryMonth, we remember trailblazers so that future generations can learn, explore & lead. We honor their work today by providing all young people equitable access to opportunities & support.

Dates to Remember

- International Women's Day, March 8
- AmeriCorps Week, March 12 - 18

DAY OF THE GIRL PANEL



“ Women are strong, resilient, amazing and empowered, and just having a mentor who understands both the strengths and challenges of being a woman just means the world. I think that representation, specifically, matters. It matters to see yourself in others, and I think it can make a big difference. ”



SANAH JIVANI

*Founder/CEO, Love Your
Natural Self Foundation*

**KANSAS VOLUNTEER COMMISSION MONTHLY
WEBINAR SERIES**



Haley Matherly - Volunteer Engagement Coordinator



Amy Pinger, CVA - Harvesters

VOLUNTEER ENGAGEMENT MONTHLY WEBINAR SERIES

Second Tuesday of the Month
10 am - 11 am

March Topic: Creating Volunteer Job Descriptions



[REGISTER ONLINE](#)



Questions? Contact: volunteer@ksde.org



CIVIC ENGAGEMENT MONTHLY WEBINAR SERIES

Third Friday of the Month

12 pm - 1 pm

March Topic: Incorporating
Service-Learning in the
Classroom



KANSAS VOLUNTEER COMMISSION
KANSERVE.ORG

Dr. Jessica Dorsey
Kansas Volunteer
Commission
Executive Director

REGISTER ONLINE



Questions? Contact: volunteer@ksde.org

2023 Webinar Series

The Kansas Volunteer Commission announces monthly mentoring, volunteerism, and civic engagement webinars. There is no cost to attend, and webinars will be recorded and posted at <https://kanserve.org>.

MENTORING WEBINAR SERIES

1st Thursday of every month from 1:00 pm – 2:00 pm

Register at: https://ksde.zoom.us/meeting/register/tZwrf-qsrzovGtXz8lr0emGLjj_DG_CT13yJ

VOLUNTEER ENGAGEMENT WEBINAR SERIES

2nd Tuesday of every month from 10:00 am – 11:00 am

Register at:

<https://ksde.zoom.us/meeting/register/tZlldOuqpszsqGdawvZuzMUHNDFkBXqe5cY9c>

CIVIC ENGAGEMENT WEBINAR SERIES

3rd Friday of every month from 12:00 pm – 1:00 pm

Register at: <https://ksde.zoom.us/meeting/register/tZcpf-ysqzMuE9DyLPOE1vavtN-BJn87iapK>



AmeriCorps Kansas



Will Matherly is currently serving as an AmeriCorps member at Harvesters and is completing his fourth term of service.

Over the last four years, Will has provided over 1,650 hours of service while maintaining his status as a full-time student at Kansas State University. Serving as an AmeriCorps member since the onset of the pandemic has provided Will with a unique service experience. He has served in the Volunteer Engagement Center, supported food drives,

volunteered at the Cat's Cupboard, and mobile distributions throughout our region.

Additionally, he has been the go-to at the Kansas Distribution Center for multiple community events, including Downtown Topeka Touch a Truck and the Miracle on Kansas Avenue parade. Thank you for your service, Will.



GIVE BACK KANSAS CHALLENGE



An employer-supported
volunteer challenge
<https://bit.ly/Givebackks>



The Give Back Kansas Challenge is an eight-week challenge that engages Kansans in employer-supported volunteering, both during and outside the workday. The Kansas Volunteer Commission and Volunteer Kansas are excited to co-partner in this challenge because much research shows the connection between employer-supported volunteering and improved employee engagement, employee wellness, organizational commitment, job satisfaction, and retention. There is also research connecting employee engagement with increased profitability and productivity.

There is no cost to participate, and the challenge is open to ANY employer in Kansas (for-profit, non-profit, education system, and government). Employers may participate as one organization or by location if there are multiple sites (e.g., 123 Construction-Lawrence or ABC Insurance-Salina). Employers register in advance to participate, and volunteer hours are reported through an organization's point of contact through an online report form. Non-profits participating in the challenge are encouraged to invite the local businesses they connect with to participate.

Based on the number of entries received and company size, employers will be divided into three categories (large, medium, and small). Winners will be selected by determining the average number of volunteer hours per employee completed during the challenge period (total volunteer hours ÷ total employees). The leaderboard will be updated every Monday! Employers achieving the highest average in each size category will be awarded a \$1,000 donation to a charity of their choice.

Register here by April 1, 2023.

For questions, please contact Jessica at jdorsey@ksde.org or (785) 296-3163.

2023 MINI GRANT SERIES

2023 MINI-GRANT SERIES

MENTOR CAPACITY BUILDING

GUIDELINES & APPLICATION RELEASE: 1/06/2023

9/11 NATIONAL DAY OF SERVICE

GUIDELINES & APPLICATION RELEASE: 7/03/2023

VOLUNTEER MANAGER SUPPORT

GUIDELINES & APPLICATION RELEASE: 2/01/2023

RURAL & INDIGENOUS COMMUNITIES

GUIDELINES & APPLICATION RELEASE: 8/01/2023

YOUTH CIVIC ENGAGEMENT

GUIDELINES & APPLICATION RELEASE: 3/27/2023

MLK NATIONAL DAY OF SERVICE

GUIDELINES & APPLICATION RELEASE: 10/09/2023

SOCIAL JUSTICE CAPACITY BUILDING

GUIDELINES & APPLICATION RELEASE: 5/01/2023



KANSAS VOLUNTEER COMMISSION
KANSERVE.ORG

FOLLOW US ON SOCIAL MEDIA TO STAY UP-TO-DATE
ON ALL OUR MINI-GRANT OPPORTUNITIES

MENTOR CAPACITY BUILDING MINI-GRANT AWARDEES

Mentor Kansas and the Kansas Volunteer Commission are proud to award \$22,895 to the following organizations

- Big Brothers Big Sisters of Salina
- Catholic Charities, Inc.
- Center for Supportive Communities, Inc.
- Culture Creations, Inc.
- Kansas Big Brothers Big Sisters Serving Cowley & Sumner Counties
- Kansas Big Brothers Big Sisters Serving Riley County
- Youth Horizons, Inc.



KANSAS VOLUNTEER COMMISSION
KANSERVE.ORG

STAFF AND COMMISSIONER SPOTLIGHT

In February, the Kansas Leadership Center announced that Kay Emerson won the Ron Alexander scholarship for the Teach Leadership Intensive program.



Kay serves as the AmeriCorps Kansas Coordinator for the Kansas Volunteer Commission.

Kay wrote: “As a community leader, additional training in the KLC principles and competencies will support my ability to facilitate stakeholder conversations and navigate initiatives to improve the economic and social conditions that prevent our communities from making systematic changes. We create long-term solutions if we all have the skills and the belief that we can lead.”

UPCOMING EVENTS

The Mission of Managers of Volunteer Engagement (M.O.V.E.) is to build and engage a network of volunteer managers and cultivate a volunteerism culture.

M.O.V.E. Topeka

Meets the Third Wednesday of Each Month
Wednesday, March 15, 2023
9:00 to 10:00 AM

To learn more, please visit www.moveks.org.
Or reach out via [Facebook](#).

M.O.V.E. Kansas

Virtual

Meets the Fourth Thursday of Each Month
Thursday, March 23, 2023
9:00 to 10:00 AM

To learn more, please email
united.way.of.franklin.co@gmail.com

Volunteer Managers Meeting United Way of Douglas County

Meets the 2nd Tuesday of Odd Numbered Months

Tuesday, March 14, 2023
9:00 to 10:00 AM
To learn more, please email
kabelruch@uwkawvalley.org

Volunteer Managers Network United Way of the Plains

2023 Dates T.B.D.
12:00 to 1:00 PM
To learn more, please email Abel Frederic
afrederic@unitedwayplains.org

NOTE: The above dates, times, and locations are subject to change.

CONNECT WITH OUR STAFF



Dr. Jessica Dorsey
Commission
Executive Director
(785) 296-3163
jdorsey@ksde.org



Kay Emerson
AmeriCorps Kansas
Coordinator
(785) 368-6232
kemerson@ksde.org



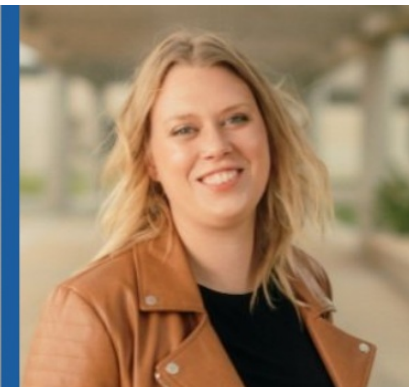
Amanda Noll
Financial Specialist
(785) 368-6207
anoll@ksde.org



Tierney Kirtdoll
Mentor Kansas
Coordinator
(785) 368-6211
tkirtdoll@ksde.org



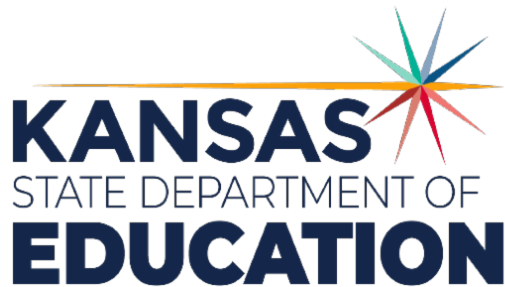
Sarah Palubinski
School & Community
Partnership
Coordinator
(785) 296-7801
spalubinski@ksde.org



Haley Matherly
Volunteer
Engagement
Coordinator
(785) 296-5712
volunteer@ksde.org



Elaine Rodriguez
*Administrative
Specialist*
(785) 368-7436
erodriguez@ksde.org



[LIKE US ON FACEBOOK](#)



[VISIT OUR WEBSITE](#)

Kansas Volunteer Commission | 900 SW Jackson Street Suite 105, Topeka, KS 66612

[Unsubscribe volunteer@ksde.org](#)

[Update Profile](#) | [Constant Contact Data
Notice](#)

Sent by volunteer@ksde.org powered by



Try email marketing for free today!